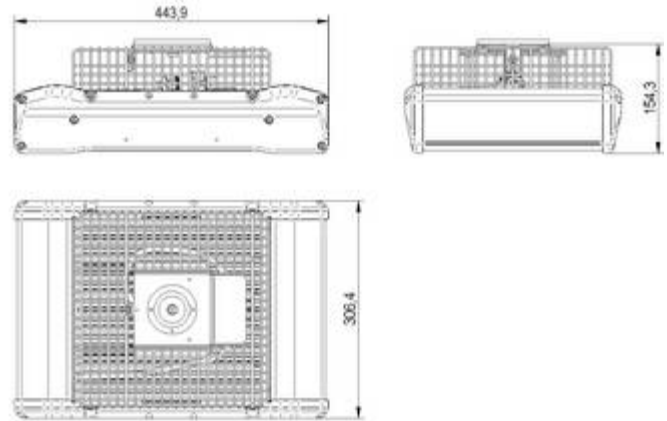


LEDWAY Park - Ceiling/canopy mounting 0



Code	Light bars	Number of LED	System power (VA)			Lumen (lm)
			@175mA	@350mA (Standard Version)	@525mA	@350mA (Standard Version)
LYP##904B*	2	40	27	53	80	4.000
LYP##906B*	3	60	39	78	117	6.000
LYP##908B*	4	80	52	104	156	8.000
LYP##910B*	5	100	65	129	194	10.000

Power Factor 0,9

Housing is all in aluminum construction, all components are 100% mercury free and totally recyclable. Sharp profile for low wind exposition. Electrical components compartment in die cast aluminium. LED Lightbars applied on an aluminum extrusion designed for best thermal management thank to the Ruud AirFlow Tecnology. This system ensures long life and maximum yield. Exclusive ColorFast DeltaGuard® finish features an E-Coat epoxy primer with an ultra-durable silver powder topcoat, providing excellent resistance to corrosion, ultraviolet degradation and abrasion. The finish is covered by our Deltaguard® 10 year limited warranty.

LED LightBar modules made of 20 Class 1 (EN 60825-1), LEDs with light system rated power between 40 and 100 LEDs, 6000°K Color temperature, CRI ≥ 75. available also in 4300°K and 3500°K color Temperature LED . Main dissipation body in extruded aluminium with an integrated printed gasket designed around the geometry of the lenses to guarantee an IP66 degree of protection. High-performance and precision lenses made of Ruud NanoOptic® patented technology. Photometric performance and curves selectable for any application requested.

Internal high-performance and reliability electronic constant current driver, set at 350mA driving current (as standard version), available also with driving current at 175mA, 525mA.

Fixed ceiling/canopy mount.

Five years Limited warranty on LEDs and drivers . Insulation Class II. Power factor 90%. Degree of Protection IP66. Compliant with: EN 60598-1 and EN 60598-2-3. Operating temperature: - 40°C ÷ + 55°C. Impact resistance IK08.

Rated Voltage: 220-240Vac (capable 120-277Vac) 50÷ 60Hz.

Ledway Park is available with the "option G" Multi-level and K for Flux dimming control, see the Multi-level option spec sheet



	Driver Current	Lumen Multiplier	Power Multiplier	L ₇₀ Life* (hours)	L ₈₀ Life* (hours)
Ledway Park	175 mA	0,6	0,5	> 150.000	> 150.000
Ledway Park	350 mA (standard)	1	1	> 150.000	> 100.000
Ledway Park	525 mA	1,3	1,5	> 65.000	> 35.000
* Based on fixture operating at 15° C.					

Color Temperature	Lumen Multiplier
6000K (standard)	1,00
4300K	0,80
3500K	0,75

LIGHT KINETICS
Sustainable Lighting & Energy Solutions

www.lightkinetics.com

P.O. BOX 92516 • NORWOOD • JOHANNESBURG • SOUTH AFRICA • 2117
TEL: +27 (0) 11 728-1249 • FAX: +27865 024 111
EMAIL: CTHELIGHT@LIGHTKINETICS.COM

Colours

Standard Finish



Silver



Black



White

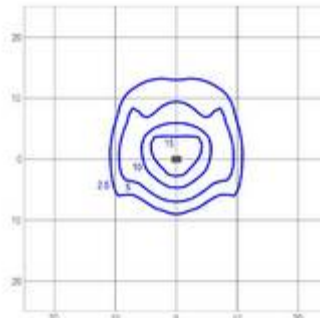
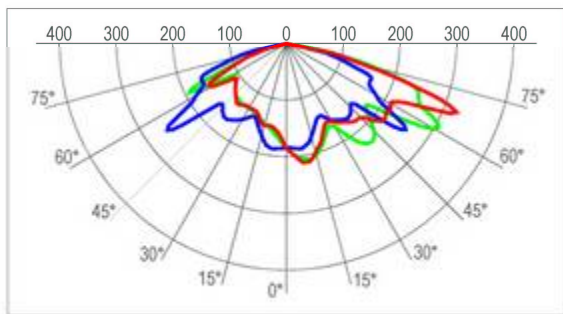


ECO LIGHT

Photometries

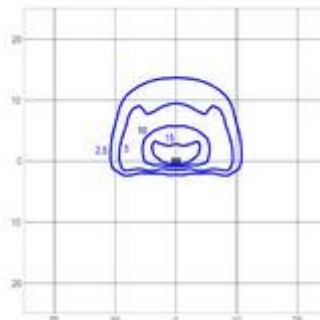
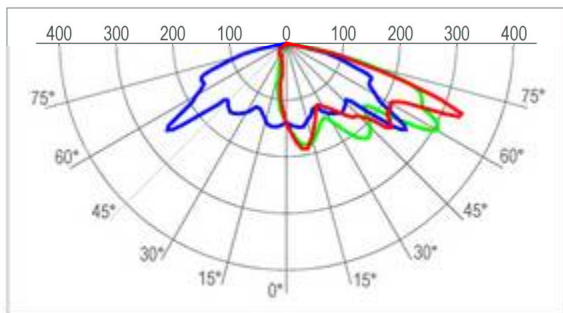
Polar curves refer to actual photometric tests by independent laboratories. For lighting calculations and layouts refer to Initial delivered lumens chart and use Light Loss Factor equal to 0,9.

AC Optic



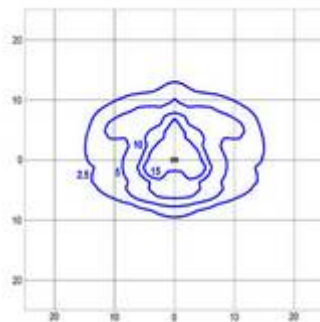
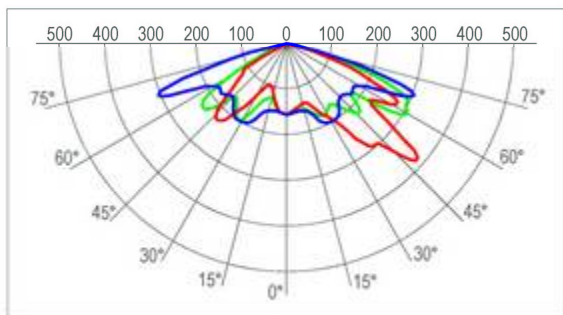
3 Lightbars (60 LED) 6 mt. height isolux diagram

ACB Optic



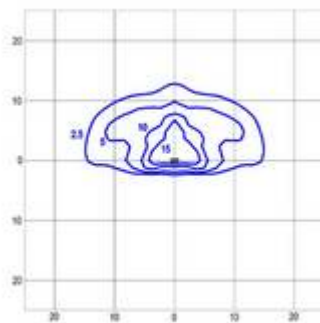
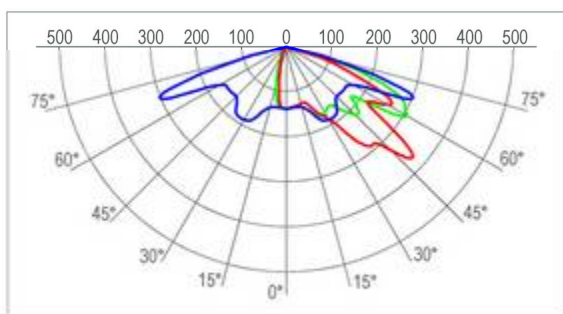
3 Lightbars (60 LED) 6 mt. height isolux diagram

PR Optic



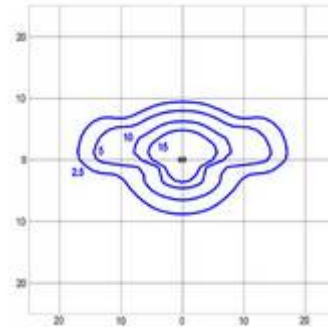
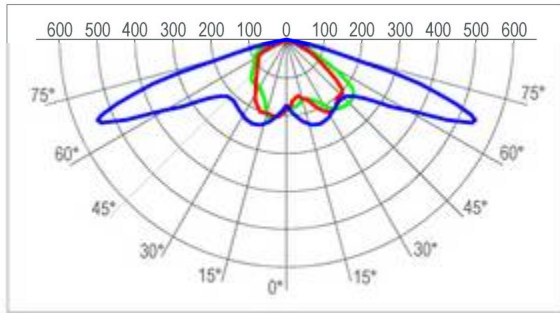
3 Lightbars (60 LED) 6 mt. height isolux diagram.

PRB Optic



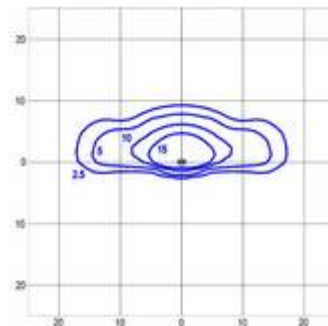
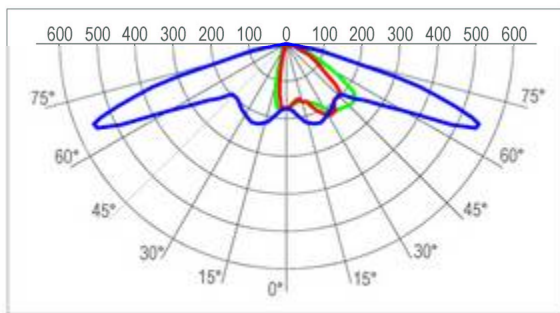
3 Lightbars (60 LED) 6 mt. height isolux diagram.

TL Optic



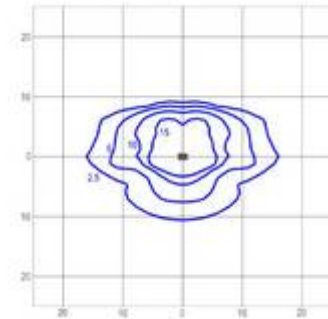
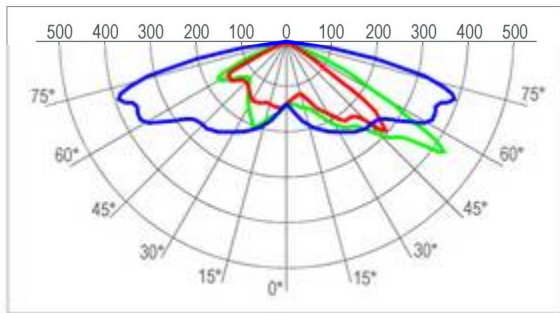
3 Lightbars (60 LED) 6 mt. height isolux diagram

TLB Optic



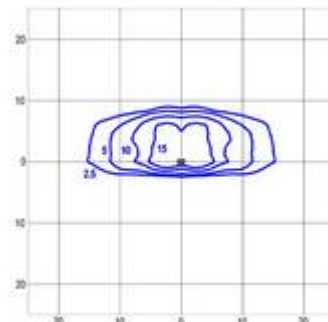
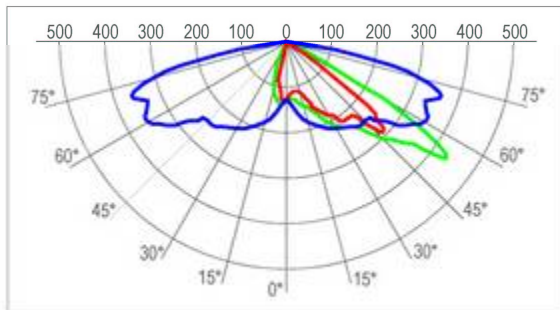
3 Lightbars (60 LED) 6 mt. height isolux diagram

TS Optic



3 Lightbars (60 LED) 6 mt. height isolux diagram

TSB Optic

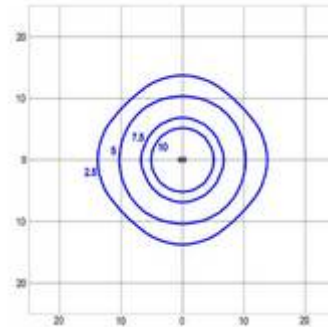
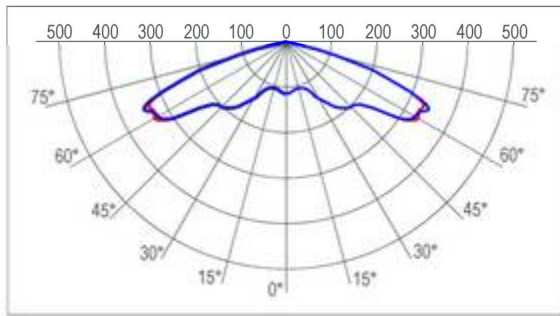


3 Lightbars (60 LED) 6 mt. height isolux diagram

RUUD LED

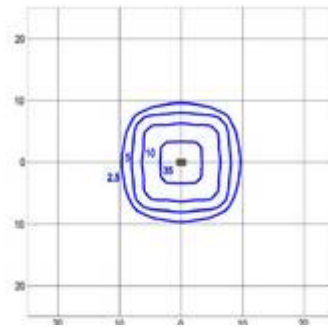
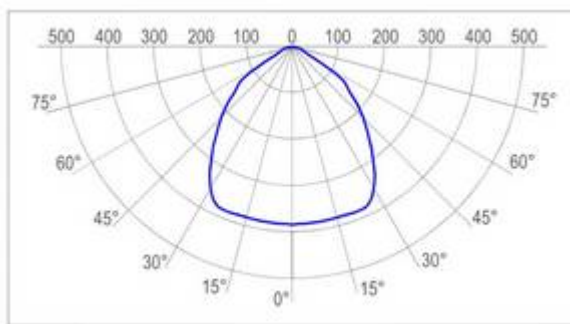
●●●●●●●● Ruud Lighting

QV Optic



3 Lightbars (60 LED) 6 mt. height isolux diagram

FS Optic



3 Lightbars (60 LED) 6 mt. height isolux diagram



LIGHT KINETICS
*Sustainable Lighting
& Energy Solutions*

www.lightkinetics.com

P.O. BOX 92516 • NORWOOD • JOHANNESBURG • SOUTH AFRICA • 2117
TEL: +27 (0) 11 728-1249 • FAX: +27865 024 111
EMAIL: CTHELIGHT@LIGHTKINETICS.COM